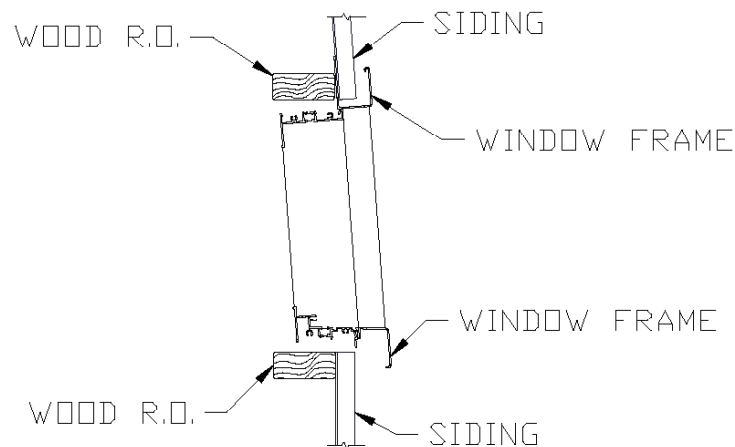
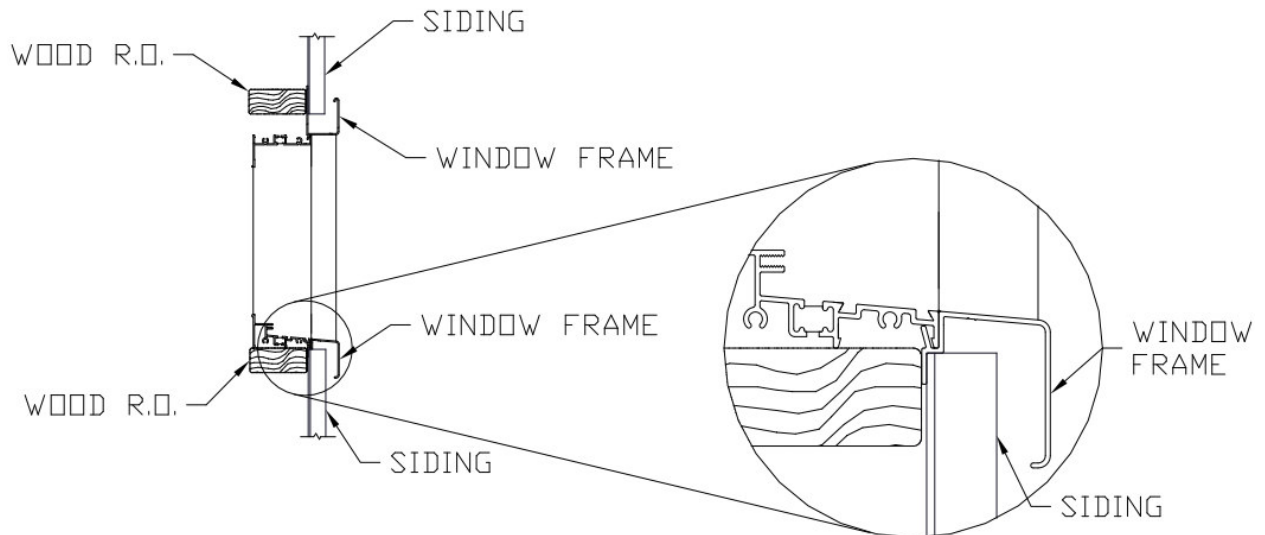


**Installation Instructions For Vinyl
Windows With EZ-V™ Trim Frame**

1. The trim frame system on this window is designed to allow the window to be installed into the wall **AFTER** the steel siding has been applied to the building.
2. The rough opening must be square, plumb and the correct nominal size to meet the manufacturer's specifications, i.e. a 4/0 x 3/0 window unit requires a 48" x 36" **wood** rough opening.
3. Be certain that when planning the location of the window openings. That both vertical edges of the window opening will be in the flat areas of the corrugated siding.
4. Be certain that no part of the siding extends into the rough opening at the top or either side. If there are any jagged edges at the top or bottom of the opening, flatten them with a pliers or file them off. It is **very critical** that the steel at the bottom of the opening **is not cut below the edge of the wood rough opening**, and **no more** than 1/8" above.
5. Do not nail the siding any closer than 12" from the edges of the rough opening until after the window unit is installed.
6. Be certain that the steel siding along the vertical sides of the opening is smooth and flat so that the vertical nail fin base strip will lay flat against the siding.
7. Make a horizontal cut in the steel siding, 1 5/8" long, at the top corner on each side of the opening. Be certain that the cut is even with the top edge of the opening in the siding.
8. To install the window into the opening, first apply a bead of caulk to the back side of the vertical nail fin base, hold the unit at an angle to the wall with the top of the unit nearest the wall and the bottom of the unit extended out.
9. Insert the 1" long fin on the top of the EZ-Fit J-channel header between the siding and the wood header of the rough opening. Slide the window unit up and into the opening in one motion. See the illustration below.



10. After the window unit is pushed all the way to the top of the opening and in tight against the siding, slide the unit down to the wood sill of the rough opening, with the 1/2" long fin of the EZ-Fit J-channel sill sliding between the siding and the wood frame sill. See the illustration below.



11. Check the unit to be certain it is level, plumb and resting on the wood sill of the opening.
12. Use screws or nails through the **round, bottom** holes first to secure the window to the rough opening. These fasteners **should be** fully installed.
13. Insert fasteners into the remaining **slotted** holes next. These fasteners **should not** be fully installed but rather lightly tightened down to allow for thermal expansion and contraction of the vinyl parts, much as with vinyl siding.
14. The fasteners at the top of the unit frame should pass through the siding, **above** the J-channel nailing fin and then into the wood frame of the rough opening. The fasteners at the bottom of the unit should pass through the siding **below** the J-channel and into the wood of the rough opening. The fins will then be clamped between the siding and the wood frame.
15. Caulk the top of the unit, starting at the beginning of the 1" horizontal slot in the siding to the first corrugation. Do this on both sides of the frame header. It is not necessary to caulk across the entire length of the top of the unit.
16. Caulk the bottom of the unit from the edge of the rough opening to the first rib also.
17. Attach the vertical nailing fin base covers by engaging the **outside** hook into the groove in the base strip away from the window unit. Roll the cover over the outer leg of the base strip and press down until the **inside** hook engages with the groove in the outside of the strip.
18. Check the unit for ease of operation.
19. Before installing the inside trim, we recommend packing fiberglass insulation between the window frame and the wood rough opening frame to reduce thermal conductivity through the air space.