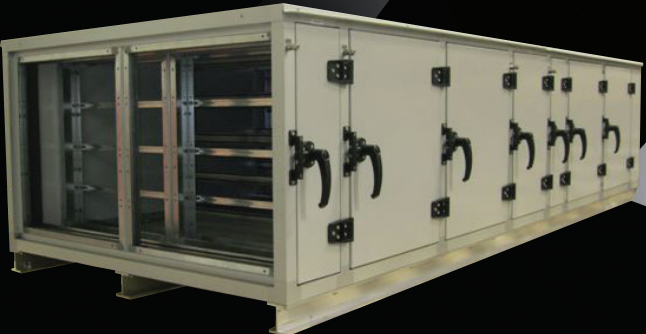


CONTRACT MANUFACTURING

An alliance with A.J. allows you to:

- Offer a polyurethane foam-filled design to meet specs
- Relieve bottlenecks and constraints
- Increase throughput of your facility
- Concentrate management resources on growth
- Apply the collective skill sets of two companies
- Focus production resources on core competencies
- Leverage A.J. design and development expertise
- Control overhead and expansion costs
- Target quality audits to meet your standards
- Private label and Ship direct



CONFIGURABLE FRAME SYSTEMS

- 41 mm non-thermal profile
- .875" panel
- 70 mm thermal or non-thermal profile
- 2" panel

Available as Assembled Units or Knock Down kits

ACCESS DOOR SPECIFICATIONS

		1"	1.7"	2"	2.7"	4"
STYLE	Perimeter Style Door Panel					
	Perimeter Style Door Panel w/Thermal Break					
	Cakepan Style Door Panel					
	Cakepan Style Door Panel w/Thermal Break					
MATERIAL OPTIONS	Galvanized 24, 20, 18, 16 ga					
	Galvannealed 24, 20, 16 ga					
	Stainless 304 2B 24, 20, 16 ga					
	Smooth Aluminum .040"					
	Embossed Aluminum .032"					
	3" X 8" Lites; Wire, Clear					
LITE OPTIONS	8" X 8" Lites; Wire, Clear					
	11" X 11" Lites; Wire, Clear					
	3" X 8" Wire/Clear, Clear/Clear					
	8" X 8" Wire/Clear, Clear/Clear					
	11" X 11" Wire/Clear, Clear/Clear					

WALL PANEL SPECIFICATIONS

		ACTUAL PANEL THICKNESS						
		.875"	1"	1.7"	1.875"	2"	3"	4"
STYLE	Cakepan Panel							
	Cakepan Panel w/Thermal Break							
	Flanged Cakepan							
	No-Through-Metal-Panel—Full Thermal Break							
MATERIAL OPTIONS	Galvanized 24, 20, 18, 16 ga							
	Galvannealed 24, 20, 16 ga							
	Stainless 304 2B 24, 20, 16 ga							
	Galvalume 24 ga							
	Smooth Aluminum .040"							
	Embossed Aluminum .032"							

HIGH PERFORMANCE

ACCESS DOORS, WALL PANELS AND CONTRACT MANUFACTURING



Building Ideas



Building Ideas

A.J. Manufacturing, Inc. • 1217 Oak Street • Bloomer, WI 54724
1-800-328-9448 • www.ajdoor.com





DOUBLE WALL ACCESS DOOR

ACCESS DOORS

R Factor of 6.5 Per Inch of Door Thickness

Field Reglazeable Windows

Field Replaceable Gaskets

Zero Total CFM Air Leak at 10.0" wg

Air Infiltration Performance Valid for Inswing and Outswing Doors

Door Thicknesses Available: 1", 1.7", 2", 2.7", 4"

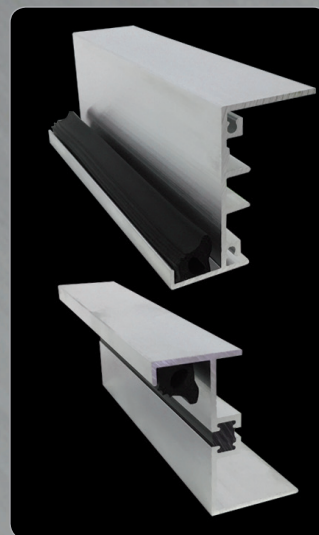
ACCESS DOORS

DOUBLE WALL ACCESS DOOR

High performance double wall access doors for HVAC air handling units. Prehung, insulated, door leaf with aluminum frame. Pressure injected with minimum 2.2 pounds per cubic foot of polyurethane foam. Polyurethane foam bonds with sheets to make a seamless, rigid panel with minimum insulating value of R6.5 per inch. Thermal door uses a high-density polyurethane thermal break.

MASTER FRAME CONSTRUCTION

- Frame is fabricated of commercial quality aluminum extrusions
- Master frame is shipped completely assembled with hinges and door attached
- Thermal frame uses a high density polyurethane thermal break
- Frame is prepared for installation into wall panel with .250" diameter holes through the installation flange of the top, bottom and both vertical frame members
- T Frame is used for inswing application
- Z Frame is used for outswing application



PERIMETER PANEL STYLE

Extruded aluminum perimeter framing locks in the inner and outer door skins.

CAKEPAN STYLE

Innovative design has engineered the aluminum out of the door perimeter, while maintaining superior performance. Polyurethane foam bonds two interlocking sheets to make a single strong and rigid door.

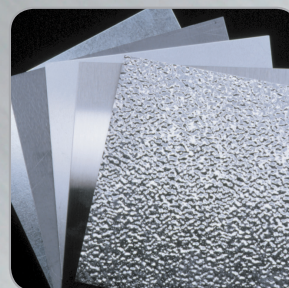
DOOR HARDWARE

- Door panel is reinforced at all latch locations to provide maximum strength and performance
- Stainless steel hinges standard on all doors

OPTIONS

STYLE

- Thermal
- Non-thermal
- Outswing
- Inswing
- Door Lites



HINGE TYPE

- Standard – 6" stainless steel piano hinges



DOOR LITES FOAMED IN PLACE

Best in Class!

- Insulated tempered glass (clear/clear, wire/clear) in the following sizes:
 - 3" x 8" View area
 - 8" x 8" View area
 - 11" x 11" View area - single glazed clear tempered glass in 1" doors: 8" x 8" or 11" x 11" View area
- After-market lites and reglazing kits are also available



WALL PANELS

FOAM INJECTED WALL PANELS

Wall panels are offered with many of the same options and attributes as our doors. Wall panels are intended for the construction of AHU cabinets.

REDUCE TIME, LABOR & WEIGHT

Push more work through your operation by letting A.J. fabricate wall panels for you, and complete an AHU cabinet that is appealing in appearance, fit and finish, while reducing overall time, labor and weight. Since the polyurethane foam acts as a structural component of the panel, we are able to use lighter gauge skins and reduce total weight while maintaining strength.

CAKEPAN CONSTRUCTION

Polyurethane foam bonds two interlocking sheets to make a single strong rigid panel.

NO-THROUGH-METAL-PANEL (N-T-M-P)

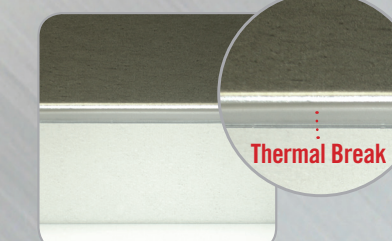
Full thermal break along panel edges formed by wrapping sheets around a pvc board; bonded with polyurethane foam for strength and rigidity.



N-T-M-P



Flanged Panel



Thermal Panel

FLANGED CAKEPAN WALL PANEL

Mounting flanges can be foamed into any panel edge for removable panels or for frameless cabinet construction.

WALL PANEL OPTIONS

- Variety of frame attachment options available
- Thermal and non-thermal designs available
- Built to your size requirements



Building Ideas

CALL TODAY
1.800.328.9448