



# Building Ideas

A.J. Manufacturing, Inc. • 1217 Oak Street • Bloomer, WI 54724  
1-800-328-9448 • www.ajdoor.com

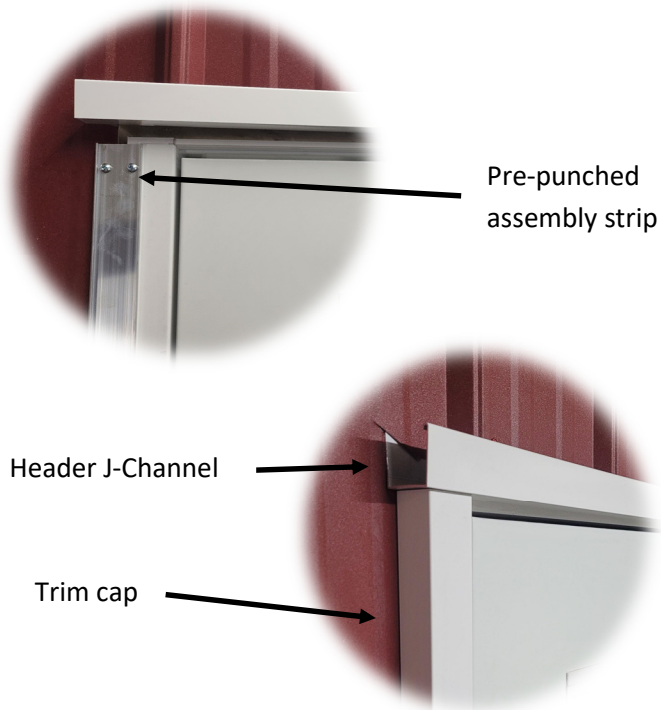


## **EZ-FIT™ Door Trim System**

**The quickest, most effective, and attractive door trim & flashing system ever...**

**For A.J. Series 5100, 7100 & R51 Doors**

- For use on inswing or outswing doors
- For use after the building steel has been installed
- Matches **EZ-v™** Vinyl Window Trim appearance



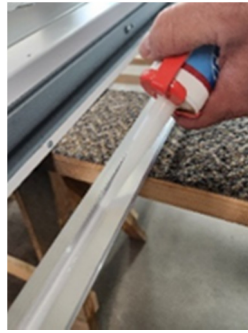
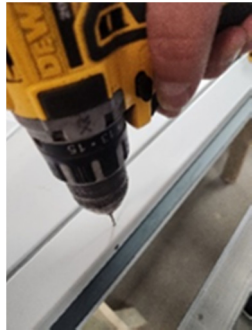
### **Kit includes:**

- 2 Assembly strips with pre-punched mounting holes for attachment to the vertical jambs
- 2 Trim caps, white or custom painted
- 1 J-Channel header, white or custom painted
- All necessary fasteners



## Apply the Assembly Strip to the door

1. Set door on saw horses and mark the jamb  $\frac{1}{4}$ " down from the top of the door.

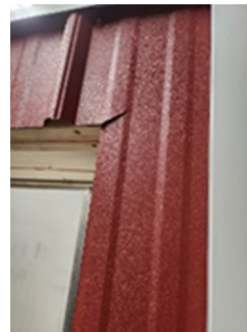


2. Set the assembly strip onto the jamb,  $\frac{1}{4}$ " from the top of the door and mark your holes. Pre-drill pilot holes.

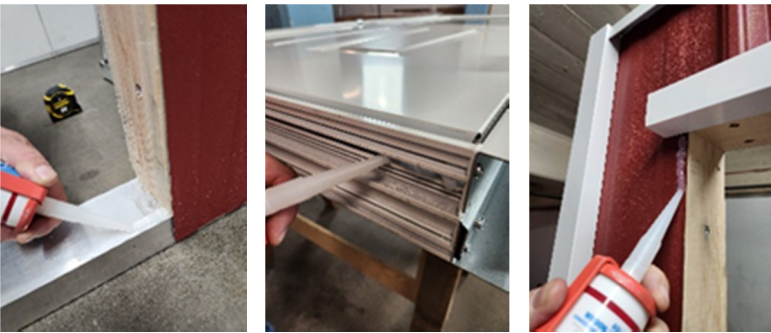
3. Run a bead of silicone along the leg to seal against the jamb. Using the supplied self-tapping screws, attach the Assembly Strip to the jamb. Be sure it is  $\frac{1}{4}$ " from the top of the door.

## Install the top J-channel

4. Measure and mark your cut. Measure  $1\frac{1}{4}$ " horizontally and  $\frac{1}{2}$ " vertically from the top corner of your door opening. Draw a line and cut an angled cut for the J-channel to slide into.

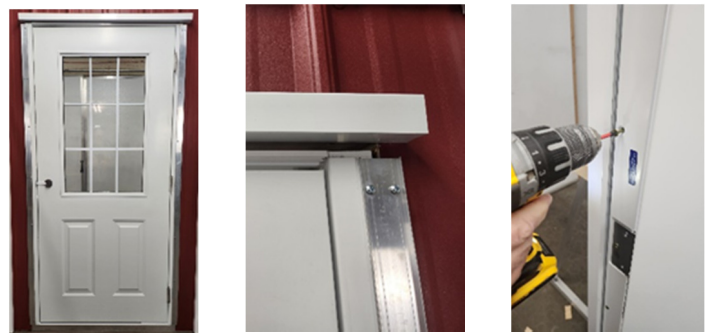


## Prepare the opening



5. Silicone the sill liberally and the vertical steel next to the opening.

## Install the door



6. Shim the door so it is solid, square and plumb in the opening. Using the self-tapping screws provided, install 4 screws on each side of the door through the Assembly Strip. Check the operation of the door and then put all screws provided through the jambs.

## Finishing

7. Install the Trim Caps by snapping them into the Assembly Strips. Pull the J-channel down tight to the Trim caps and run a bead of caulk between the door header and the J-channel. Finish by caulking the angled cuts at the top of the door.

